



MONTHLY MEMBERSHIP PROGRESS REPORT

District 29 I

Results as of: 06/30/2019

GMT: CINDY GREGG

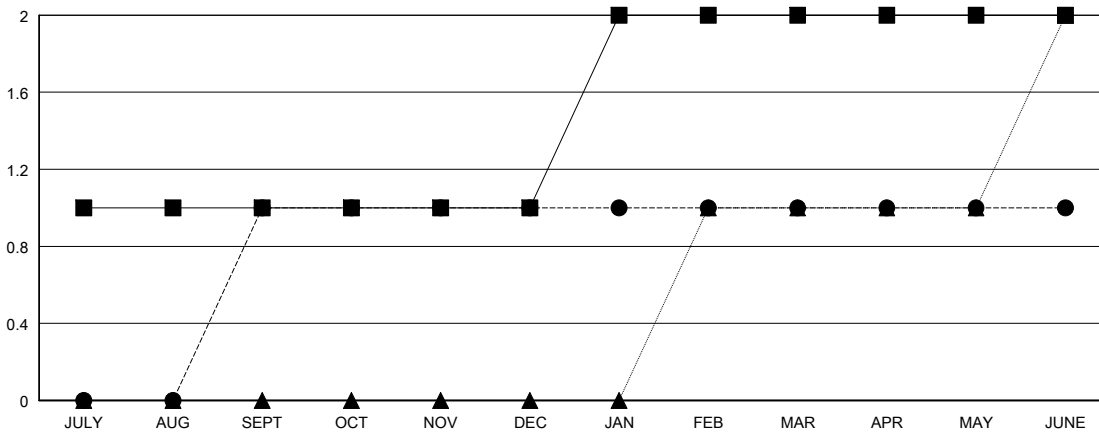
LOCATION WEST VIRGINIA

GMT CA

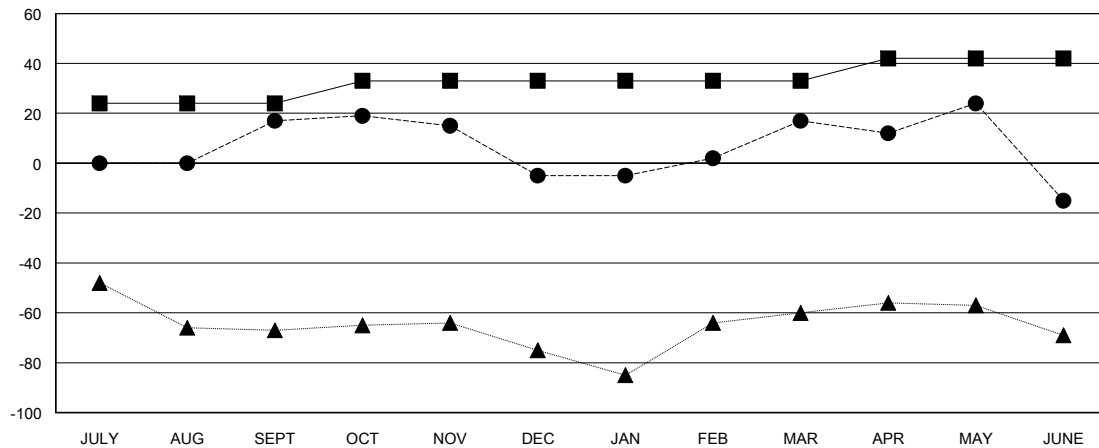
Clubs			
RESULTS FOR 2018-2019			
QUARTER	NEW CLUB GOAL	NEW CLUBS	DROPPED CLUBS
JULY/AUG/SEPT	1	1	0
OCT/NOV/DEC	0	0	0
JAN/FEB/MAR	1	0	0
APR/MAY/JUNE	0	0	0

Members			
RESULTS FOR 2018-2019			
QUARTER	MEMBER GROWTH NET GOAL	MEMBER GROWTH ACTUAL	DROPPED MEMBERS ACTUAL (including transfers)
JULY/AUG/SEPT	24	42	20
OCT/NOV/DEC	9	24	41
JAN/FEB/MAR	0	36	14
APR/MAY/JUNE	9	37	68

GOALS AND ACTUAL NEW CLUBS CUMULATIVE



GOALS AND ACTUAL MEMBERS CUMULATIVE



DROPPED CLUBS: 0

39 CLUBS OF 58 ADDED 1 OR MORE NEW MEMBERS

GENDER DISTRIBUTION	
MALE	1,037 (65.80%)
FEMALE	539 (34.20%)
Women Percentage Fiscal Year Goal: 36%	

DROPPED MEMBERS	
DECEASED	25
CLUB CANCELLED	0
OTHER	118
TOTAL	143

[CLICK HERE FOR CUMULATIVE MEMBERSHIP DATA](#)

TOTAL FAMILY UNIT MEMBERS	472
FAMILY MEMBERS PAYING HALF DUES	239